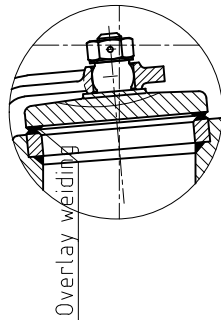
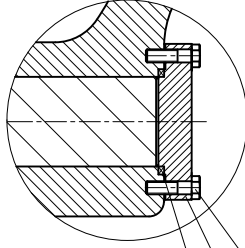
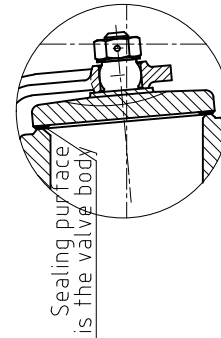


Notice:  
Gland for 24"

A WCBwC6LCB



A CF8MCF8

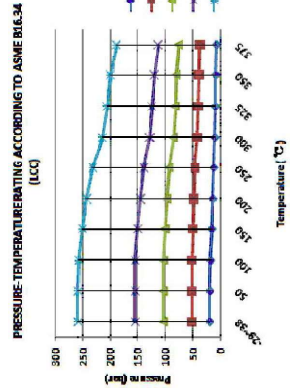
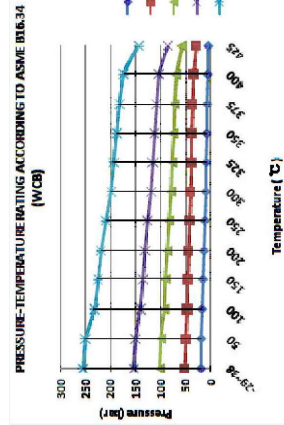


ITEM	NAME	STANDARD	MATERIAL SPECIFICATIONS
1	BODY	API TRIM 8	API TRIM 16
2	SEAT	ASTM A216 WCB	ASTM A216 WCB
3	DISC	ASTM A105+STL6	ASTM A105+STL6
4	HINGE	ASTM A105+ER410	ASTM A105+STL6
5	GASKET	ASTM A216 WCB	ASTM A216 WCB
6	NUT	ASTM A276 410	ASTM A276 410
7	PIN	ASTM A182 F6	ASTM A182 F6
8	RIVET	AISI 304	AISI 304
9	NAME PLATE	AISI 304	AISI 304
10	GASKET	F304+FLEXIBLE GRAPHITE	F304+FLEXIBLE GRAPHITE
11	BONNET	ASTM A216 WCB	ASTM A216 WCB
12	BOLT	ASTM A193-B7	ASTM A193-B7
13	NUT	ASTM A194-2H	ASTM A194-2H
14	GASKET	AISI 304	AISI 304
15	PLUG	ASTM A276 410	ASTM A276 410
16	PIN	AISI 304	AISI 304
17	EYEBOLT	CARBON STEEL	CARBON STEEL
18	GASKET	F304+FLEXIBLE GRAPHITE	F304+FLEXIBLE GRAPHITE
19	GLAND	ASTM A105	ASTM A105
20	BOLT	ASTM A193-B7M	ASTM A193-B7M

SUITABLE TEMP(t)	WCB	LCC
ASME B16.34	-29to+425Deg C	-46to+345 Deg C
EU-PED	-5to+425Deg C	-46to+345Deg C
	WATER,STEAM,OIL	

**TEST PRESSURE TO API 598 & ASME B16.34**

TEMPERATURE (0~38℃)	WCB	LCC
SHELL TEST (Bar)	29.4	29.7
BACK SHELL TEST(Bar)	21.6	21.8
SEAL TEST (Bar)	21.6	21.8



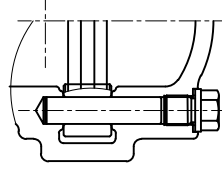
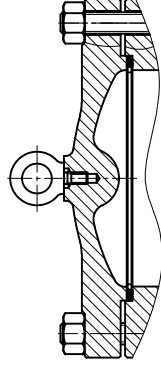
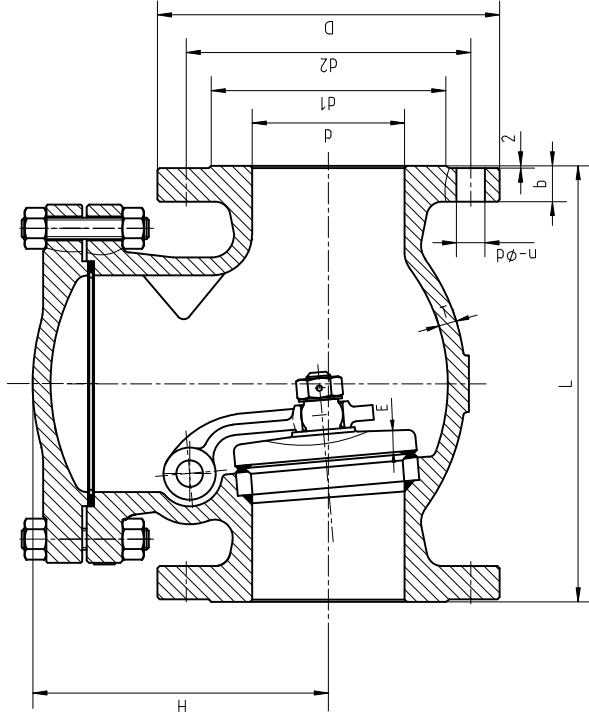
PROJECT:	----	DATE	----	SCALE	----	DRAWING No :	----
CLIENT:	----	TRACED	----	CHECKED	----	REV:	0
T.T. REF:	----	DATE	----	SCALE	----	DRAWING No :	----
ITEM:	----	DATE	----	SCALE	----	DRAWING No :	----
		2016.6.15					
		WB	JT				
		DRAWN	CHECKED				



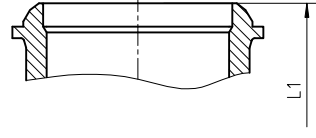
**TT Valves UK Ltd**

**CHECK VALVE  
CLASS-150**

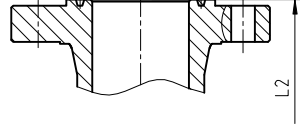
Notice:  
Eyebolt for 4" & Larger



BW



RTJ



STANDARD	
FACE TO FACE	ASME B16.10
FLANGE ENDS	ASME B16.5
DESIGN STANDARDS	BS 1868
TESTING	API 598

SIZE	FLANGE DIMENSIONS				E	n-φd	DIMENSIONS (mm)				WEIGHTS (Kg)	FACE TO FACE (mm)			BONNET BOLT (MATERIAL B7)
	φd	φd1	φd2	D			T	H	L	L1		L2	L	L1	
2"	51	92	120.5	152	16	8	4-φ19	9	135	/	203.2	203	216	1/2X75	
2.5"	65	105	139.5	178	18	11	4-φ19	9.5	155	/	205.9	206	229	1/2X70	
3"	76	127	152.5	190	19	13	4-φ19	10.3	168	/	241	241	254	1/2X80	
4"	102	157	190.5	229	24	16	8-φ19	11.1	235	/	292	292	305	9/16X85	
5"	127	186	216	254	24	19	8-φ22	11.9	240	/	330.2	330	343	1/2X80	
6"	152	216	241.5	279	26	23	8-φ22	11.9	277	/	356	356	368	9/16X90	
8"	203	270	298.5	343	29	25	8-φ22	12.7	339	/	495.3	495	508	5/8X100	
10"	254	324.8	362	406	31	29	12-φ25	14.3	398	/	622	622	635	3/4X110	
12"	305	381	432	483	32	30	12-φ25	15.9	471	/	698	698	711	3/4X110	
14"	337	413	476	533	35	30	12-φ29	16.6	510	/	787	787	800	7/8X120	
16"	387	470	540	597	37	30	16-φ29	17.5	578	/	864	864	876	7/8X135	
18"	438	533	578	635	40	30	16-φ32	18.2	604	/	978	978	991	7/8X135	

PROJECT:	----		
CLIENT:	----		
T.T. REF:	----		
ITEM:	----		
REV.	DATE	WB	JT
	2016.6.15		
		DRAWN	CHECKED



TT Valves UK Ltd

DATE	NAME	CHECK VALVE CLASS-150
TRACED	CHECKED	
SCALE	---	DRAWING No :
REV.		0