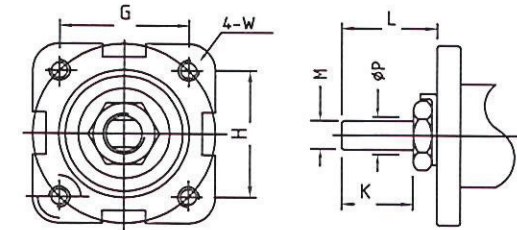
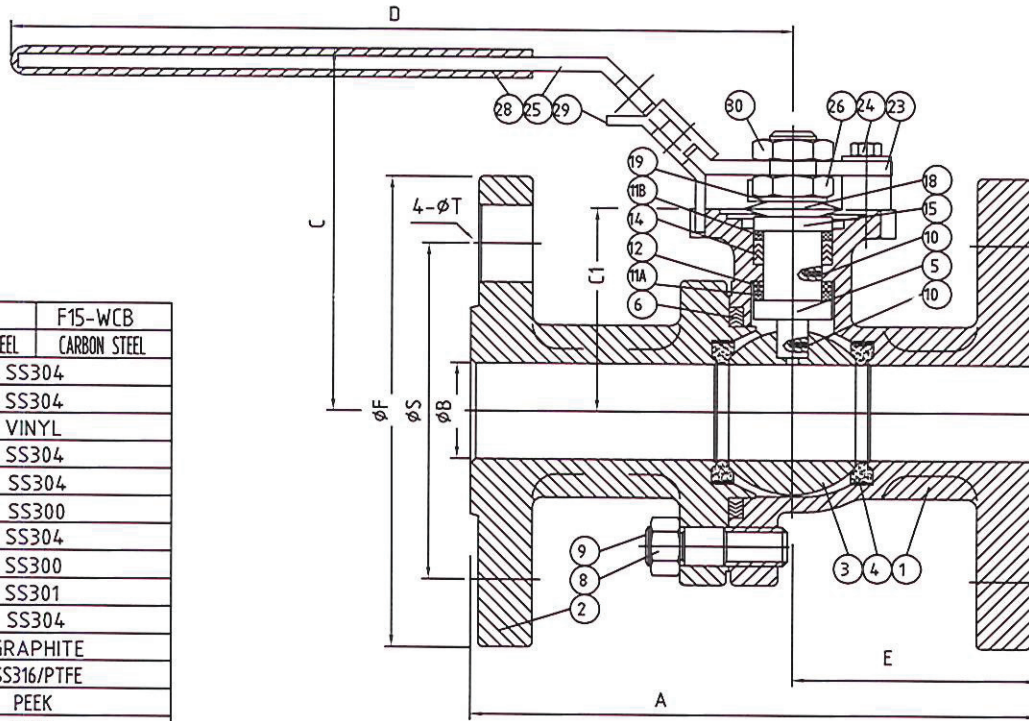


DO NOT SCALE. IF IN DOUBT ASK

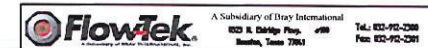
SIZE	A	B	C	D	E	C1	F	G	H	K	L	M	P	S	T	W	WEIGHT [kgs]
1/2"	108	15.9	66	165	45.5	39.1	88.9	29.7	29.7	8.00	14.00	6.35	9.52	60.5	15.7	10-24UNC	1.8
3/4"	117	20.0	74	165	51.0	42.4	98.6	29.7	29.7	8.00	14.00	6.35	9.52	69.9	15.7	10-24UNC	2.7
1"	127	25.4	87	200	54.1	52.1	108.0	35.4	35.4	11.00	19.00	8.00	11.12	79.2	15.7	1/4-20UNC	3.6
1 1/4"	140	32.0	92	200	55.9	55.9	117.3	35.4	35.4	11.00	19.00	8.00	11.12	88.9	15.7	1/4-20UNC	5.4
1 1/2"	165	38.0	105	250	70.1	66.0	127.0	49.5	49.5	12.95	23.00	9.50	15.88	98.6	15.7	5/16-18UNC	6.8
2"	178	50.0	115	265	78.0	74.9	152.4	49.5	49.5	12.95	23.00	9.50	15.88	120.7	19.0	5/16-18UNC	9.0



Mounting Dimension

BILL OF MATERIAL			F15-316	F15-WCB
NO	PART NAME	QTY	STAINLESS STEEL	CARBON STEEL
30	HANDLE NUT	1		SS304
29	LOCATING LOCK	1		SS304
28	HANDLE SLEEVE	1		VINYL
26	GLAND NUT	1		SS304
25	HANDLE	1		SS304
24	VALVE STOP BOLT	1		SS300
23	VALVE STOP SET SLEEVE	1		SS304
19	TAB WASHER	1		SS300
18	SPRING WASHER	2		SS301
15	PK GLD SLEEVE	1		SS304
14	STEM PACKING	3		GRAPHITE
12	THRUST WASHER	1		SS316/PTFE
11B	PACKING PROTECTOR	1		PEEK
11A	WASHER PROTECTOR	1		PEEK
10	ANTI-STATIC	2		SS304
9	BODY STUD	4	A193 B8	A193 B7
8	BODY NUT	4	A194 GR.8	A194 GR.2H
6	BODY GASKET	1		SPIRAL WOUND (316/GRAPHITE)
5	STEM	1		ASTM A479 Gr. 316
4	SEAT	2		TFM
3	BALL	1		A351-CF8M
2	CAP	1	A351-CF8M	A216-WCB
1	BODY	1	A351-CF8M	A216-WCB

FIRE SAFE TO API607 WITH GRAPHITE STEM PACKING



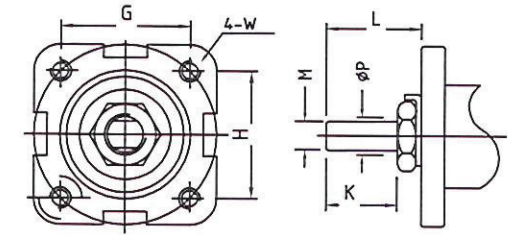
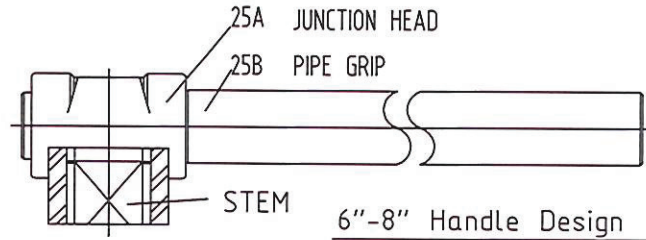
DISTRIBUTION											
MAN	QA	INS	MAT	PUR	SALES	BUS	BCN	BMX	BEU	BPA	BCH
06											
05											
04											
03											
02											
01											
RFP	03-01-12	FIRST ISSUE	DATE	03-01-12							
No.	DATE	ERN	THIRD ANGLE								
REVISIONS											
<p>THE INFORMATION CONTAINED HEREIN SHALL NOT BE COPIED, TRANSFERRED, CONVEYED OR DISPLAYED IN ANY MANNER THAT WOULD VIOLATE ITS PROPRIETARY NATURE WITHOUT THE EXPRESS WRITTEN PERMISSION OF BRAY INTERNATIONAL, INC.</p>											
<p>DRN BY <u>AJP</u> DATE <u>03-01-12</u></p> <p>CHK BY <u>DL</u> DATE <u>03-01-12</u></p> <p>APP BY <u>AJP</u> DATE <u>03-01-12</u></p>					<p>TOLERANCES (EXCEPT AS NOTED)</p> <p>-IMPERIAL- XXX±.005 XX±.010 -METRIC- XX±.10 X±.25</p> <p>-ANGULAR- ±1/2"</p>						
<p>Flowtek The High Performance Company</p> <p>BRAY CONTROLS (UK) LTD A Subsidiary of BRAY INTERNATIONAL, Inc.</p> <p>GENERAL ARRANGEMENT 1/2" - 2" FLOWTEK F15 BALL VALVE [ANSI 150]</p>											
MATERIAL: -											
SCALE -			PART No. -			DRAWING No. UK-110223			REV -		

Bray

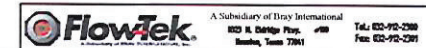
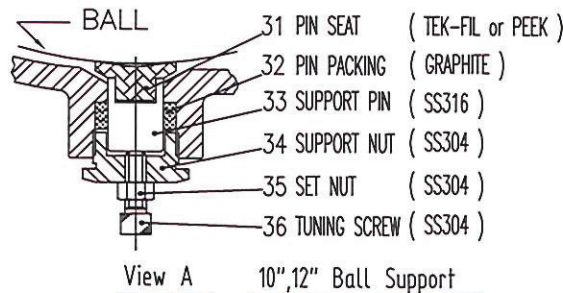
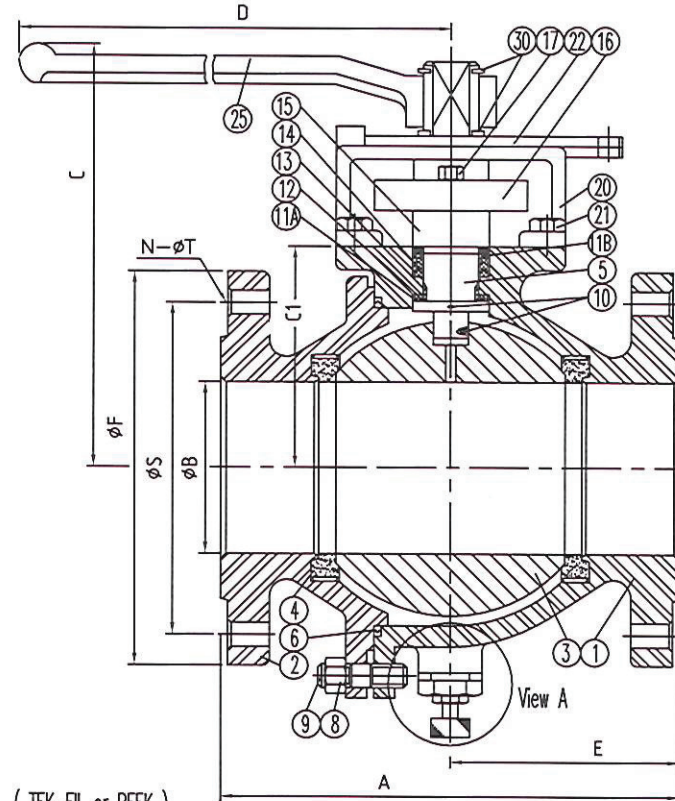
SIZE	2 1/2"	3"	4"	6"	8"	10"	12"
A	190.5	203.2	228.6	393.7	457.2	533.4	609.6
B	65.0	76.0	102.0	152.0	200.0	250.0	300.0
C	158	166	183	285	294	348	388
D	390	390	390	990	990	990	990
E	78.2	95.0	113.5	193.5	212.1	266.0	305.1
C1	86.1	93.0	111.5	182.1	193.0	251.0	291.1
F	177.8	190.5	228.6	279.4	342.9	406.4	482.6
G	47.6	47.6	47.6	85.7	85.7	115.0	115.0
H	90.0	90.0	90.0	85.7	85.7	115.0	115.0
K	44.5	44.5	44.5	40.1	54.0	55.0	55.0
L	78.0	78.0	78.0	87.0	98.0	95.0	95.0
M	17.0	17.0	17.0	26.0	26.0	35.0	35.0
N	4	4	8	8	8	12	12
P	28.0	28.0	28.0	43.5	43.5	50.0	50.0
S	139.7	152.4	190.5	241.3	298.5	362.0	431.8
T	19.0	19.0	19.0	22.4	22.4	25.4	25.4
U	1/2-13UNC			5/8-11UNC			
Weight [kgs]	16.3	20.4	34.0	61.2	131.5	226.8	317.5

BILL OF MATERIAL			F15-316	F15-WCB
NO.	PART NAME	QTY	STAINLESS STEEL	CARBON STEEL
30	SNAP RING	2	Nickel Plated	Carbon Steel
25	HANDLE	1	DUCTILE IRON	
22	TRAVEL STOPPER	1	SS304	Zinc Plated C.S.
21	HOUSING BOLT	4	SS304	Carbon Steel
20	STOP HOUSING	1	A351-CF8	A216-WCB
17	GLAND BLOT	2	SS304	Carbon Steel
16	GLAND	1	A351-CF8	A216-WCB
15	PK GLD SLEEVE	1	SS304	Carbon Steel
14	PACKING	3~4	GRAPHITE	
13	STEM BEARING	1	PEEK	
12	THRUST WASHER	1	TEK-FIL	
11B	PACKING PROTECTOR	1	PEEK	
11A	WASHER PROTECTOR	1	PEEK	
10	ANTI-STATIC	2	SS316	
9	BODY STUD	4~16	ASTM A193 B8	ASTM A193 B7
8	BODY NUT	4~16	ASTM A194 GR. 8	ASTM A194 GR. 2H
6	GASKET	1	SPRIAL WOUND WIRE(316/GRAPHITE)	
5	STEM	1	ASTM A479 Gr. 316	
4	SEAT	2	TFM-1600	
3	BALL	1	A351-CF8M	
2	CAP	1	A351-CF8M	A216-WCB
1	BODY	1	A351-CF8M	A216-WCB

DO NOT SCALE. IF IN DOUBT ASK



Mounting Dimension



DISTRIBUTION				SALES				BUS				BCN				BMX				BEU				BPA				BCH			
MAN	06	05	04	03	02	01	RFP	03-01-12	02-01-12	01-01-12	01-01-12	01-01-12	01-01-12	01-01-12	01-01-12	01-01-12	01-01-12	01-01-12	01-01-12	01-01-12	01-01-12	01-01-12	01-01-12	01-01-12	01-01-12	01-01-12	01-01-12	01-01-12	01-01-12	01-01-12	01-01-12
DRN BY: AJP				TOLERANCES (EXCEPT AS NOTED)				The High Performance Company				BRAY CONTROLS (UK) LTD				A Subsidiary of BRAY INTERNATIONAL, Inc.				Bray											
DATE: 03-01-12				-IMPERIAL- XXX±.005				GENERAL ARRANGEMENT				3" FLOWTEK F15 BALL VALVE				[ANSI 150]															
CHK BY: DL				XX±.010				MATERIAL: -				SCALE				PART No.				DRAWING No.				REV							
DATE: 03-01-12				-METRIC- XX±.10				BRAY				UK-110224																			
APP BY: AJP				X±.25				REVISIONS				THIRD ANGLE				BREAK ALL SHARP EDGES															
DATE: 03-01-12				-ANGULAR- ±1/2°																											
REVISIONS																															
THE INFORMATION CONTAINED HEREIN SHALL NOT BE COPIED, TRANSMITTED, CONVEYED OR DISPLAYED IN ANY MANNER THAT WOULD VIOLATE ITS PROPRIETARY NATURE WITHOUT THE EXPRESS WRITTEN PERMISSION OF BRAY INTERNATIONAL, INC.																															