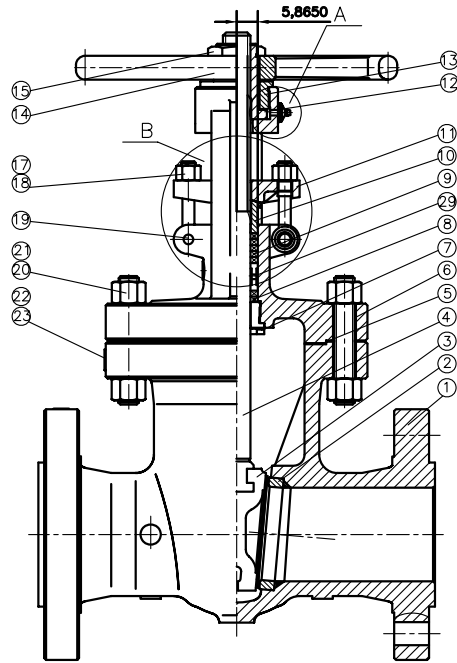
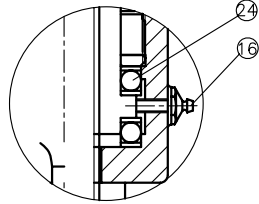


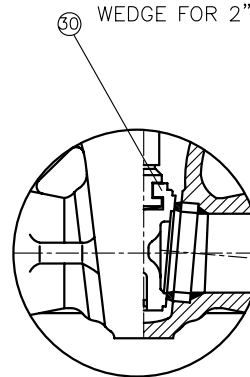
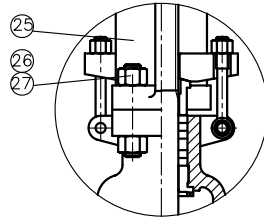
Materials comply with the requirements of NACE MR 01 75 (2002)



A Notice:  
Bearing for 8" & Larger

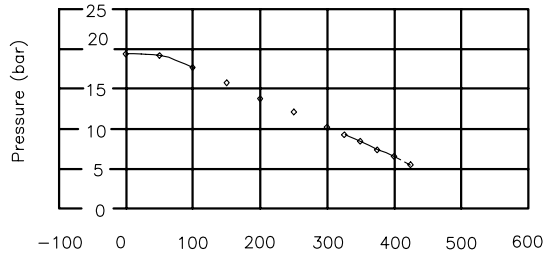


B Notice:  
Yoke for 8" & Larger

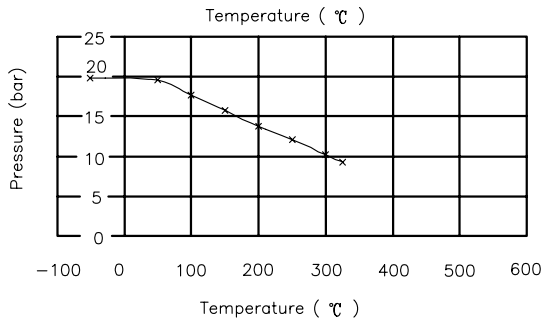


ITEM	NAME	STANDARD MATERIAL SPECIFICATIONS		
		API TRIM 8	API TRIM 5	API TRIM 16
1	BODY	ASTM A216 WCB	ASTM A216 WCB	ASTM A352 LCC
2	SEAT	ASTM A105+STL.6	ASTM A105+STL.6	ASTM A350 LF2+STL.6
3	WEDGE	ASTM A216 WCB+ER410	ASTM A216 WCB+STL.6	ASTM A352 LCC+STL.6
4	STEM	ASTM A182 F6a	ASTM A182 F6a	ASTM A182 F316
5	GASKET	F304+FLEXIBLE GRAPHITE	F304+FLEXIBLE GRAPHITE	F316+FLEXIBLE GRAPHITE
6	BONNET	ASTM A216 WCB	ASTM A216 WCB	ASTM A352 LCC
7	BACK SEAT	ASTM A276 410	ASTM A276 410	ASTM A276 316
8	GLAND PACKING	F304+GRAPHITE	F304+GRAPHITE	F316+GRAPHITE
9	GLAND PACKING	FLEXIBLE GRAPHITE	FLEXIBLE GRAPHITE	FLEXIBLE GRAPHITE
10	GLAND	ASTM A276 410	ASTM A276 410	ASTM A276 316
11	GLAND FLANGE	ASTM A216 WCB	ASTM A216 WCB	ASTM A352 LCC
12	STEM NUT	ASTM A439-D2	ASTM A439-D2	ASTM A439-D2
13	GLAND NUT	Carbon Steel	Carbon Steel	Carbon Steel
14	HANDWHEEL	Ductile Iron	Ductile Iron	Ductile Iron
15	LOCK NUT	Carbon Steel	Carbon Steel	Carbon Steel
16	Grease Nipple	Carbon Steel	Carbon Steel	Carbon Steel
17	EYE BOLT	ASTM A193-B7M	ASTM A193-B7M	ASTM A320-L7M
18	EYE NUT	ASTM A194-2HM	ASTM A194-2HM	ASTM A194-4M
19	PIN	Carbon Steel	Carbon Steel	Carbon Steel
20	BOLT	ASTM A193-B7M	ASTM A193-B7M	ASTM A320-L7M
21	NUT	ASTM A194-2HM	ASTM A194-2HM	ASTM A194-4M
22	NAME PLATE	AISI 304	AISI 304	AISI 304
23	RIVET	AISI 304	AISI 304	AISI 304
24	BEARING			
25	YOKE	ASTM A216 WCB	ASTM A216 WCB	ASTM A352 LCC
26	YOKE STUD	ASTM A193 B7M	ASTM A193 B7M	ASTM A320 L7M
27	YOKE NUT	ASTM A194 2HM	ASTM A194 2HM	ASTM A194 4M
29	DISTANCE RING	ASTM A276 410	ASTM A276 410	ASTM A276 316
30	WEDGE	ASTM A217 CA15		

**PRESSURE-TEMPERATURE RATING ACCORDING TO ASME B16.34**



◆ WCB



✕ LCC

SUITABLE TEMP(°C)	WCB	LCC
ASME B16.34	-29to+425Deg C	-46to+345 Deg C
EU-PED	-5to+425Deg C	-46to+345Deg C
	WATER,STEAM,OIL	

**TEST PRESSURE TO API 598 & ASME B16.34**

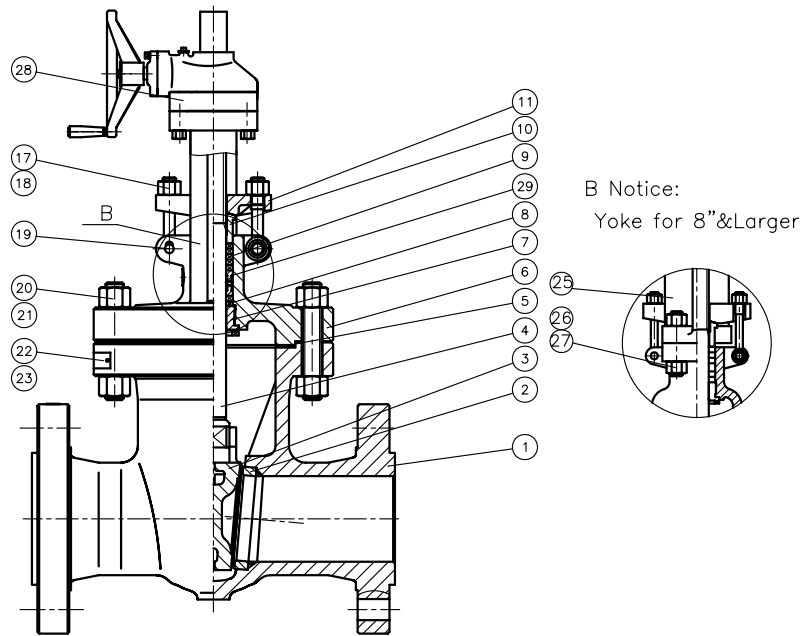
TEMPERATURE ( 0~38℃ )	WCB	LCC
SHELL TEST (Bar)	153.1	155.1
BACK SHELL TEST(Bar)	112.3	113.7
SEAL TEST (Bar)	112.3	113.7

PROJECT:	----		
CLIENT:	----		
T.T. REF:	----		
ITEM:	----		
REV.	DATE	DRAWN	CHECKED
	9-29-2015	WB	JT

**TT Valves UK Ltd**

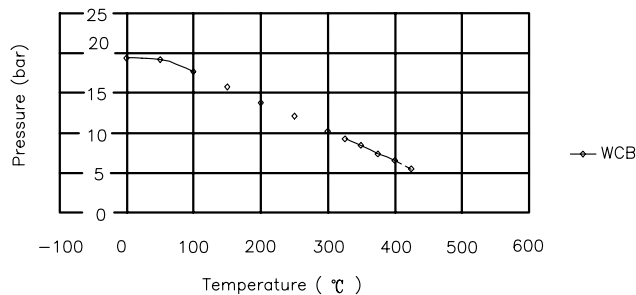
TRACED	DATE	NAME	GATE VALVE CLASS-600
CHECKED			
	SCALE	DRAWING No :	REV:
	---		0

Materials comply with the requirements of NACE MR 01 75 (2002)



ITEM	NAME	STANDARD MATERIAL SPECIFICATIONS		
		API TRIM 8	API TRIM 5	API TRIM 16
1	BODY	ASTM A216 WCB	ASTM A216 WCB	ASTM A352 LCC
2	SEAT	ASTM A105+STL.6	ASTM A105+STL.6	ASTM A350 LF2+STL.6
3	WEDGE	ASTM A216 WCB+ER410	ASTM A216 WCB+STL.6	ASTM A352 LCC+STL.6
4	STEM	ASTM A182 F6a	ASTM A182 F6a	ASTM A182 F316
5	GASKET	F304+FLEXIBLE GRAPHITE	F304+FLEXIBLE GRAPHITE	F316+FLEXIBLE GRAPHITE
6	BONNET	ASTM A216 WCB	ASTM A216 WCB	ASTM A352 LCC
7	BACK SEAT	ASTM A276 410	ASTM A276 410	ASTM A276 316
8	GLAND PACKING	F304+GRAPHITE	F304+GRAPHITE	F316+GRAPHITE
9	GLAND PACKING	FLEXIBLE GRAPHITE	FLEXIBLE GRAPHITE	FLEXIBLE GRAPHITE
10	GLAND	ASTM A276 410	ASTM A276 410	ASTM A276 316
11	GLAND FLANGE	ASTM A216 WCB	ASTM A216 WCB	ASTM A352 LCC
17	EYE BOLT	ASTM A193-B7M	ASTM A193-B7M	ASTM A320-L7M
18	EYE NUT	ASTM A194-2HM	ASTM A194-2HM	ASTM A194-4M
19	PIN	Carbon Steel	Carbon Steel	Carbon Steel
20	BOLT	ASTM A193-B7M	ASTM A193-B7M	ASTM A320-L7M
21	NUT	ASTM A194-2HM	ASTM A194-2HM	ASTM A194-4M
22	NAME PLATE	AISI 304	AISI 304	AISI 304
23	RIVET	AISI 304	AISI 304	AISI 304
25	YOKE	ASTM A216 WCB	ASTM A216 WCB	ASTM A352 LCC
26	YOKE STUD	ASTM A193 B7M	ASTM A193 B7M	ASTM A320 L7M
27	YOKE NUT	ASTM A194 2HM	ASTM A194 2HM	ASTM A194 4M
28	GEAR	COMMERCIAL		
29	DISTANCE RING	ASTM A276 410	ASTM A276 410	ASTM A276 316

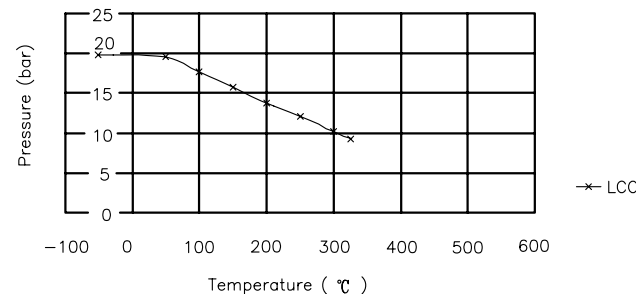
**PRESSURE-TEMPERATURE RATING ACCORDING TO ASME B16.34**



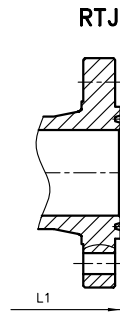
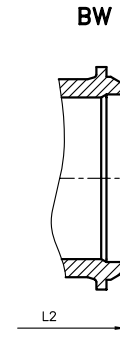
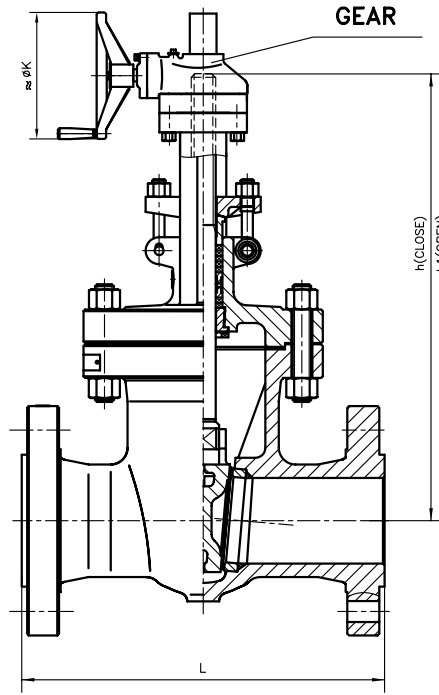
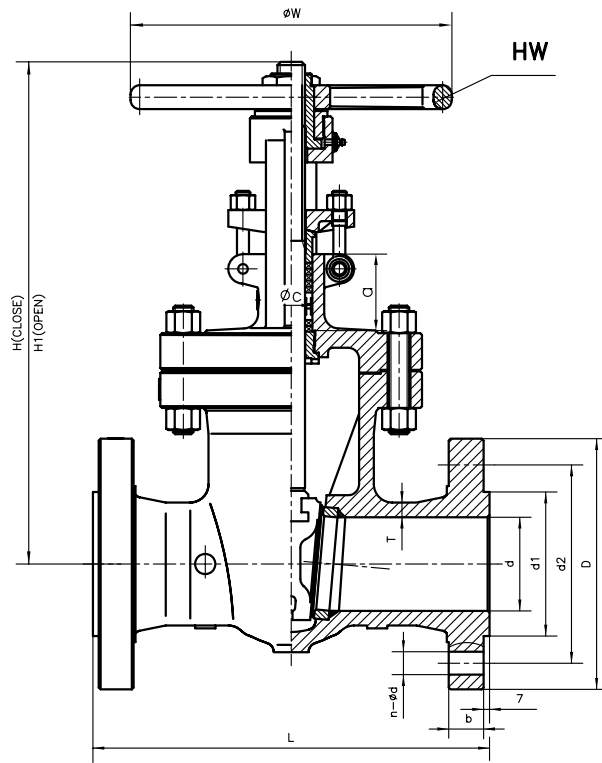
SUITABLE TEMP(°C)	WCB	LCC
ASME B16.34	-29to+425Deg C	-46to+345 Deg C
EU-PED	-5to+425Deg C	-46to+345Deg C
	WATER,STEAM,OIL	

**TEST PRESSURE TO API 598 & ASME B16.34**

TEMPERATURE ( 0~38°C )	WCB	LCC
SHELL TEST (Bar)	153.1	155.1
BACK SHELL TEST(Bar)	112.3	113.7
SEAL TEST (Bar)	112.3	113.7



PROJECT:	----	<h1>TT Valves UK Ltd</h1>				
CLIENT:	----					
T.T. REF:	----					
ITEM:	----					
TRACED	DATE	NAME	<b>GATE VALVE CLASS-600</b>			
CHECKED						
REV.	DATE	DRAWN	CHECKED	SCALE	DRAWING No :	REV:
	9-29-2015	WB	JT	---		0



STANDARD	
FACE TO FACE	ASME B16.10
FLANGE ENDS	ASME B16.5
DESIGN STANDARDS	API 600
TESTING	API 598

SIZE	øc	a	PACKING RING	NO.	MATERIAL
2"	33	59	20X6.4	6	GRAPHITE
3"	39	63	26X6.4	6	GRAPHITE
4"	46	75	30X7.9	6	GRAPHITE
6"	59	76	40X9.5	7	GRAPHITE
8"	61	96	42X9.5	6	GRAPHITE
10"	67	97	48X9.5	6	GRAPHITE
12"	78	104	52X12.7	6	GRAPHITE

SIZE	FLANGE DIMENSIONS						BONNET BOLT (MATERIAL B7)
	ød	ød1	ød2	D	b	n-ød	
2"	51	92	127	165	26	8-ø19	5/8X100
3"	76	127	168	210	32	8-ø22	5/8X115
4"	102	157	216	273	38	8-ø25	3/4X130
6"	152	216	292	356	48	12-ø29	7/8X160
8"	200	270	349	419	56	12-ø32	1X185
10"	248	324	432	508	64	16-ø35	1 1/8X210
12"	298	381	489	559	67	20-ø35	1 1/8X220

SIZE	DIMENSIONS (mm)							WEIGHTS(kg)		FACE TO FACE(mm)		
	T	H	H1	h	h1	W	K	HW	GEAR	L	L1	L2
2"	11.5	366	432	/	/	200	/	41	/	292	295	292
3"	13	454	540	/	/	250	/	88	/	356	359	356
4"	16	544	663	/	/	300	/	131	/	432	435	432
6"	19.1	665	833	665	830	450	460	253	263	559	562	559
8"	26	885	1109	885	1109	500	460	413	425	660.4	664	660
10"	29	1045	1323	1045	1323	640	610	623	436	787.4	791	787
12"	32	1161	1489	1161	1489	640	610	784	796	838	841	838

PROJECT:	----
CLIENT:	----
T.T. REF:	----
ITEM:	----

TT Valves UK Ltd

TRACED	DATE	NAME	GATE VALVE CLASS-600
CHECKED			

	SCALE	DRAWING No :	REV:
9-29-2015	WB JT	---	0
REV.	DATE	DRAWN	CHECKED